

TAMAMEN ÜCRETSİZ

# İNGİLİZCE

2. DÖNEM 1. YAZILI

7.

SINIF

SINAV ÖNCESİ NARTEST-OMAGE HEDİYESİDİR!

NARTEST İLE DAİMA  
BİR ADIM ÖNDESİNİZ.



Dijital Kitap

Akıllı Tahta

[altinkarne.com](http://altinkarne.com)

**A. Answer the questions according to the text above.**

**Hannah :**

I watched a science-fiction movie last night. The movie was called 'Space Adventure.' It was about the journey of two astronauts, Alex and Maya, to an unknown planet. They met strange creatures there and went on a difficult adventure. Their story was very exciting and interesting. You should definitely watch it.

1. What kind of movie did Hannah watch?
2. What was the movie's name?
3. Who were the main characters of the movie?
4. What was the movie about?
5. Does Hannah think the movie is worth watching?

**B. Read the mail and fill in the table.**

New Message	
<b>To:</b> Alice, Jane, Mathilda, and Jennifer	
<b>Subject:</b> Slumber party	
Hello everybody,  I'm planning to throw a fancy dress party. It will be on the 27 <sup>th</sup> of April, Saturday. I hope that you are free on that day. The party will be at my house, at 9 p.m. You should bring your costumes with you.  Would you like to join? If you want to join, please inform me until the 25th of April.  See you,  Christina	

1. Type of the Party	
2. Place of the Party	
3. Date of the Party	
4. Time of the Party	
5. Need for the Party	

**C. Answer the questions according to the dialogue.**

**Emily** : Hi, Jessica! How's it going?

**Jessica** : Hey, Emily! I'm doing well, thanks. How about you?

**Emily** : I'm good. Do you have any plans for tonight?

**Jessica** : I'm going to watch the latest episode of my favorite drama series. Would you like to watch it with me?

**Emily** : Hmm, I'm not really into drama series. I find them a bit slow. I usually prefer action movies.

**Jessica** : Alright. There's a documentary on Saturday. Would you like to watch it together?

**Emily** : I love documentaries. I'll join you on Saturday.

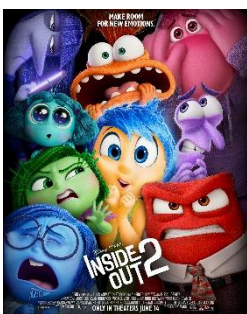
**Jessica** : Great, then. See you this weekend.

**Emily** : You too!

1. Does Jessica like drama series?
2. What does Emily usually prefer to watch?
3. Why does Emily NOT like drama series?
4. What does Jessica always watch on Saturday?

**D. Look at the visuals and write down two programmes you prefer watching. Explain your reasons for your preferences. You can use the words in the useful language box.**

**Channel 1**



**Inside Out 2**

Animated Movie

**Channel 2**



**Find the Answer**

Quiz Show

**Channel 3**



**Surviving in Wildlife**

Documentary

**Channel 4**



**Inter - Milan**

Sports Programme

**Useful Language Box**

Interesting	Funny
Informative	Exciting
Fantastic	Enjoyable



## ANSWER KEY

### Exercise A

1. She watched a science-fiction movie.
2. It was Space Adventure.
3. Alex and Maya.
4. It was about the journey of two astronauts.
5. Yes, she does.

### Exercise B

1. Fancy dress
2. At Christina's house
3. 27<sup>th</sup> of April, Sunday
4. 9 p.m.
5. Costumes

### Exercise C

1. Yes, she does.
2. She prefers action movies.
3. Because she finds them a bit slow.
4. She watches a documentary.

### Exercise D

I prefer Channel 1 because I think animated movies are interesting.

I prefer Channel 2 because I think quiz shows are informative.

